



ALABAMA
PORT AUTHORITY
PORT OF MOBILE

TERMINAL RAILWAY ALABAMA STATE DOCKS (TASD)

ROB GOLDEN
General Manager, TASD
Rob.Golden@ALports.com
(251) 441-7301

ALABAMA PORT AUTHORITY – HIGHLIGHTS

ESTABLISHED **1928**

 **\$151.7 MILLION**
REVENUE (FY21)

 **3,700** ACRES

FY2021 CONTAINERS



503,644 TEUs

FY2021 TONNAGE



24,083,120 MILLION TONS

FY2021 RAIL CARS



220,893 RAIL CARS
SERVICED



154,447
DIRECT & INDIRECT
JOBS



\$25.4
BILLION
TOTAL ECONOMIC
VALUE



\$559.3
MILLION
DIRECT & INDIRECT
TAX IMPACT



Lower Harbor – 45 ft. Draft
Serving Larger Post Panamax Ships
Containers / Steel / Coal

Upper Harbor – 40 ft. Draft
Serving Panamax Ships
Metals / Forest Products / Petroleum
Frozen Poultry / Grain / Coal

Alabama's Inland
Waterways Via
Tennessee-
Tombigbee

Intermodal Investments
Container Terminal / ICTF / Logistics

5 Class I Railroads
4 Short Line Railroads
Interstates / I-65 & I-10

ASPA Priority Capital Investment Program



General Cargo

- Targeting \$130 million to rehabilitate wharves
- Multi-phase program to improve commodity load demands, service levels and safety
- Funds through competitive grants, P3s
- Services Iron & Steel, Forest Products, Project Cargoes



Containers Intermodal

- Targeting up to \$74 million Phase IV Container Yard and Berth Expansions
- Increases container capacity needs on new 50 ft. channel
- Development of a container volume driven logistics park
- Funds through competitive grants, P3 opportunities



Freight & Intermodal Rail

- \$95 million in rail improvements
- Support railed cargo growth and increasing traffic from 5 Class I and III Regional Railroads
- Montgomery Inland Intermodal Container Facility

INDUSTRIES SERVED



1

COAL



- 11.8M tons in 2020 – 9.5M tons exported
- Metallurgical coal
- Supply Chain Loop – raw materials, steel slabs, steel coils

2

CONTAINERS



- Companies in Alabama ship globally – 190 countries
- Growing Regional and International Distribution Presence
- Cold Cargo Growth

3

STEEL



- Alabama home to 143 primary metal manufacturing plants
- Alabama Exports \$1.2 billion in primary metal annually
- 2nd largest steel port in U.S.

4

AUTOMOTIVE



- Hyundai, Mazda Toyota, Honda, Mercedes Benz, Autocar
- Ro/Ro Terminal – June 2021
- > 150 Tier 1 & Tier 2 automotive suppliers
- 15 different passenger models in 2021

5

FOREST PRODUCTS



- GP, International Paper, Resolute, Weyerhaeuser
- 2nd largest timberland base (23 million acres) in United States
- 2nd largest producer of pulp and paper

McDuffie Coal Terminal – Alabama Coal



- Serving Alabama's Met Coal Market - Current Export Capacity 10 to 12 Million Tons
- Rehab #3 Barge Unloader \$1.5 Million Completed
- Replacement \$7.5 Million Stacker Reclaimer Operational in 15 Months
- \$45 Million, Phased Capital Plan to Expand and Enhance Export Coal Capacity to 15 to 20 Million Tons
 - ✓ Adds New Equipment
 - ✓ Rebuilds Existing Equipment
 - ✓ #2 Rail Unloader Now Online

McDuffie Coal Terminal – Rail Car Unloader



MARITIME COMPLEX – CONTAINERIZED CARGO



ALABAMA
PORT AUTHORITY
PORT OF MOBILE



MOBILE INTERMODAL CONTAINER TRANSFER FACILITY

2021 volume vs. 2020: **139% growth**

225,000 TEUs/year capacity today

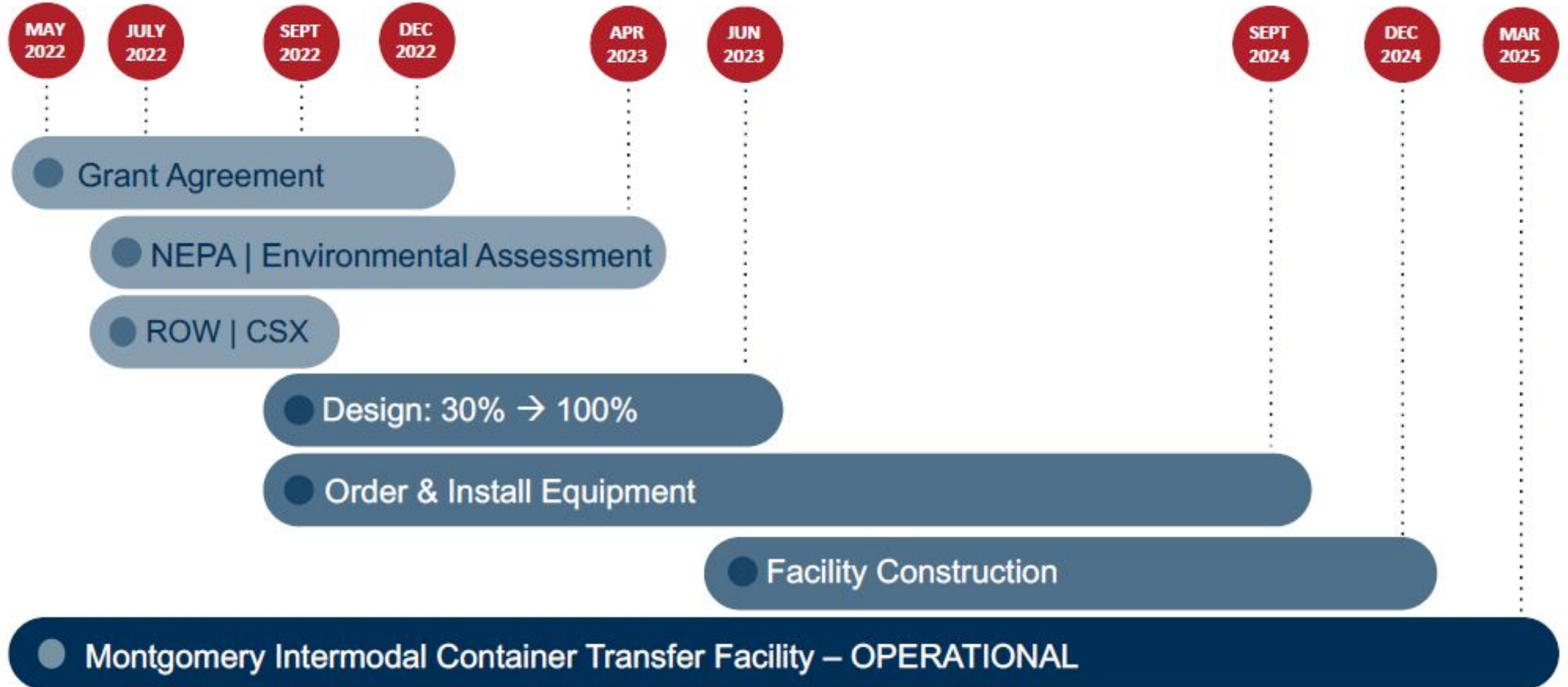
450,000 TEUs/year expansion capacity

Operated by **APM Terminals**

- Adjacent to container terminal
- “On dock” connector – \$ 25 million
- Served by Terminal Railway (TASD)

Montgomery ICTF

Path Forward & Timeline



Montgomery Intermodal Container Transfer Facility



0 1,500 3,000 Feet



80

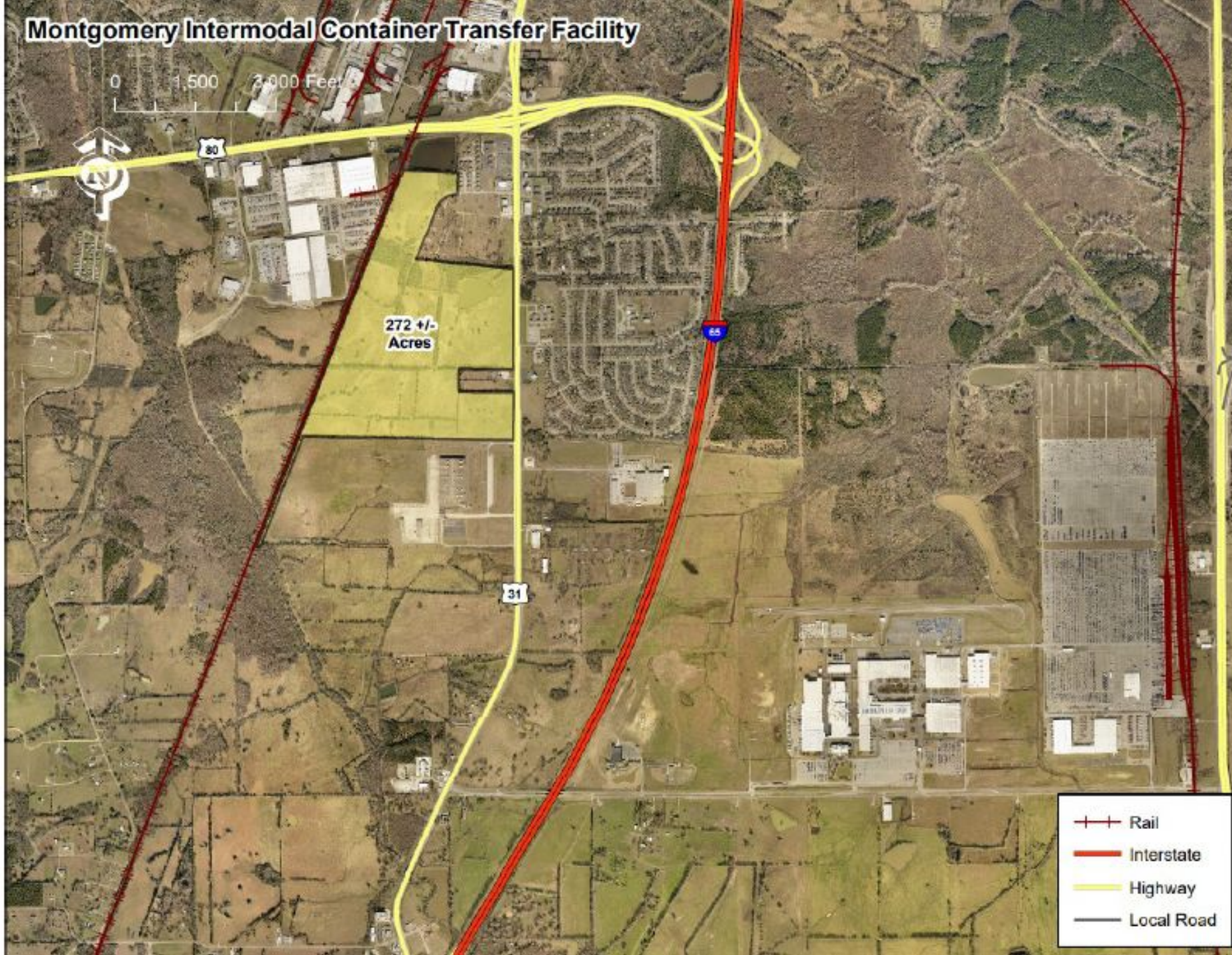
272 +/- Acres

65

31

-  Rail
-  Interstate
-  Highway
-  Local Road

SITE



Alabama – USA Corridor

- An intermodal rail option between the Port of Mobile and McCalla, AL
- Public and private initiative





Future Vision

- 1 Montgomery (CSX)
- 2 Birmingham (NS + CSX)
- 3 North Alabama (CSX)
- 4 Tennessee (CN + CSX)
- 5 Kentucky (CSX)
- 6 Chicago (CN)



Providing options for shippers by creating competition with East Coast Ports' Inland Rail Access →





ALABAMA
PORT AUTHORITY
PORT OF MOBILE

ROB GOLDEN
General Manager, T ASD
Rob.Golden@ALports.com
(251) 441-7301